

Collaborative Measures

Carole Lannon MD MPH

Our Global Aim

To eliminate all infant
deaths in Hamilton
County.

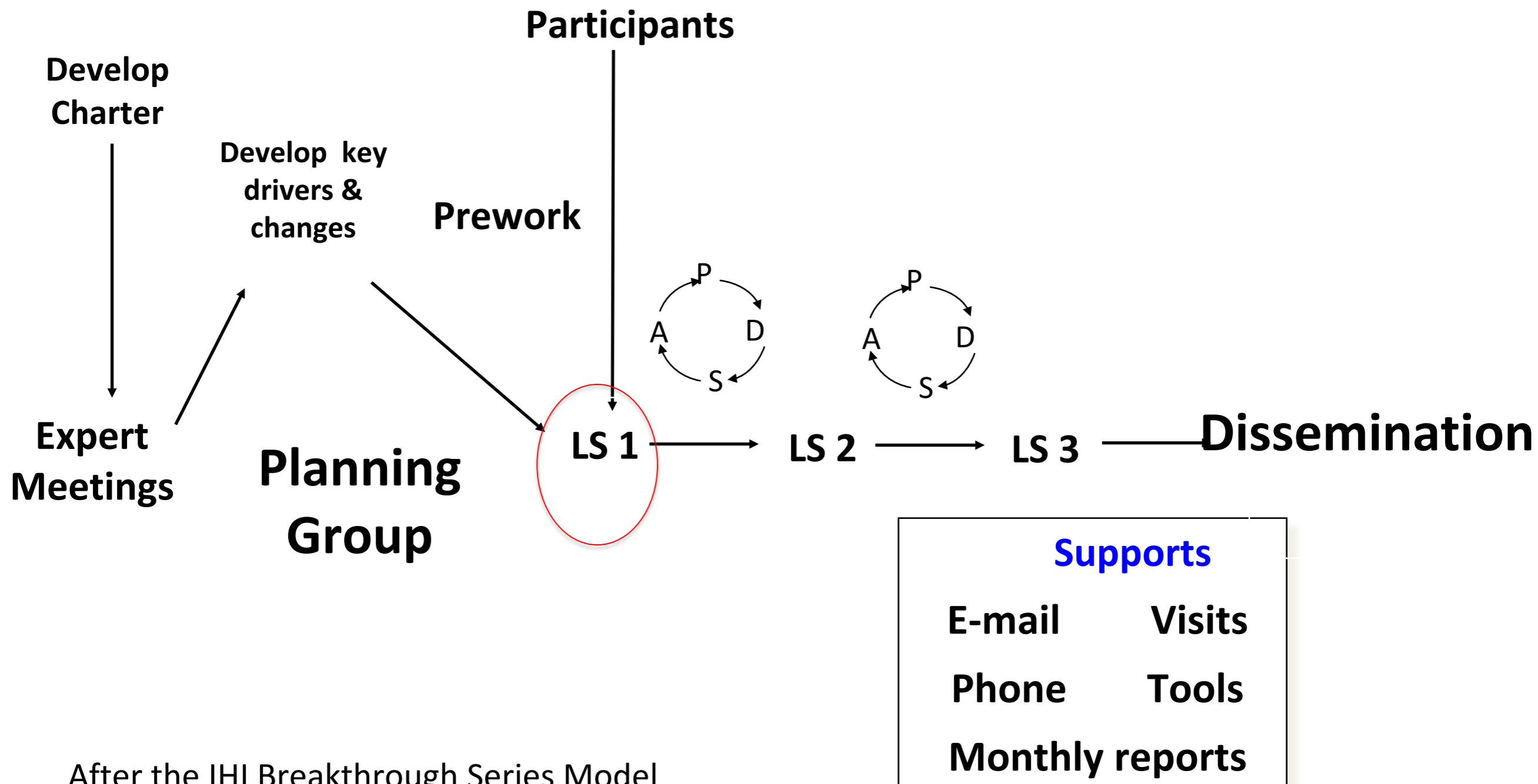
Our Global Aim

To eliminate all infant deaths
in Hamilton County.



Every family celebrates baby's first birthday.

Cincinnati Community Collaborative



Yes, We Can

<https://www.youtube.com/watch?v=8KhNzHL5kKw>

Our Global Aim

To eliminate all infant deaths
in Hamilton County.



Every family celebrates baby's first birthday.

Revision Date: 6-17-15 (v16)

GLOBAL AIM

Eliminate all infant deaths in Hamilton County

SMART AIM

Reduce the Infant Mortality rate (IMR) in Hamilton County from 9.5 to the National IMR of 5.98 (31 fewer infant deaths) by December 31, 2020.

KEY DRIVERS

Early, sustained, and valued evidence-based prenatal care for every mom
3S: smoking, safe sleep, spacing

Early, valued, and accessible care in the community

Support for pregnant women through trusted partnerships between prenatal care practices and community based organizations

Services that support families by addressing hardships (e.g. housing, safety, hunger, income, stress)

Engaged communities that ensure every pregnant mom and infant have their needs met

STRATEGIES / INTERVENTIONS

Early access to prenatal care

Use a standardized program (e.g. 5A's) to help moms quit smoking before, during, and after pregnancy

Provide safe sleep education to ensure moms understand how to prevent sleep related deaths

Provide education about birth spacing during and after pregnancy

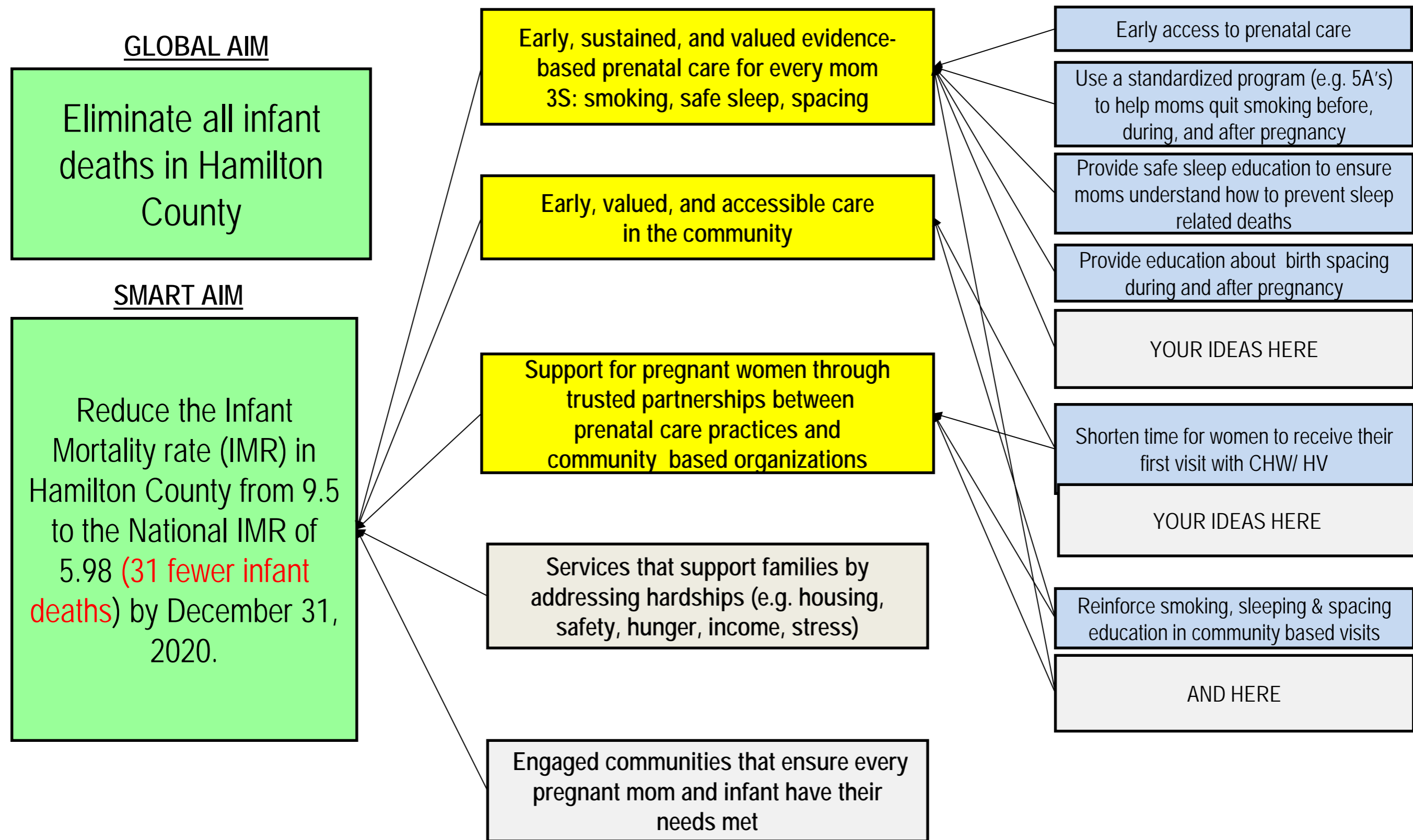
YOUR IDEAS HERE

Shorten time for women to receive their first visit with CHW/ HV

YOUR IDEAS HERE

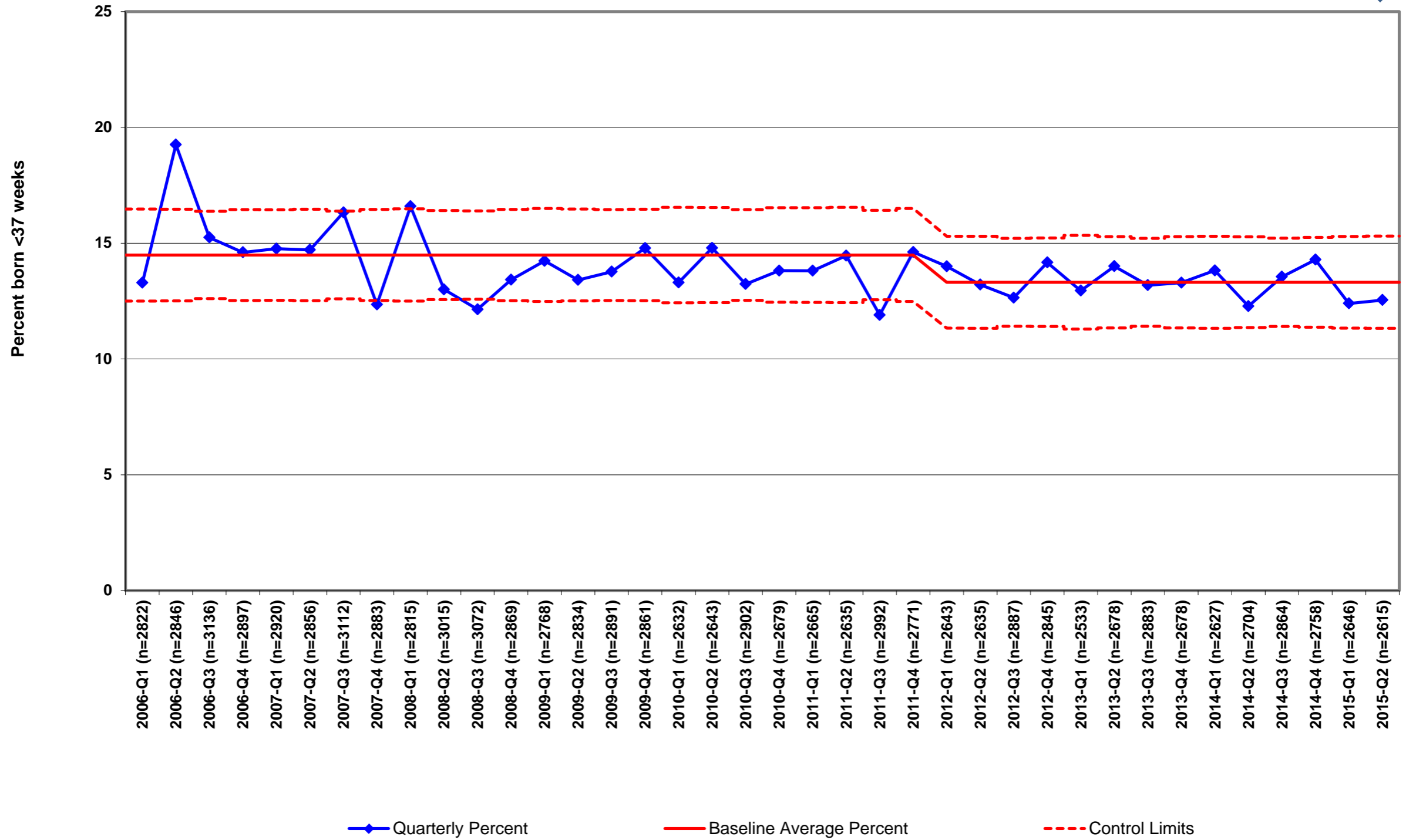
Reinforce smoking, sleeping & spacing education in community based visits

AND HERE





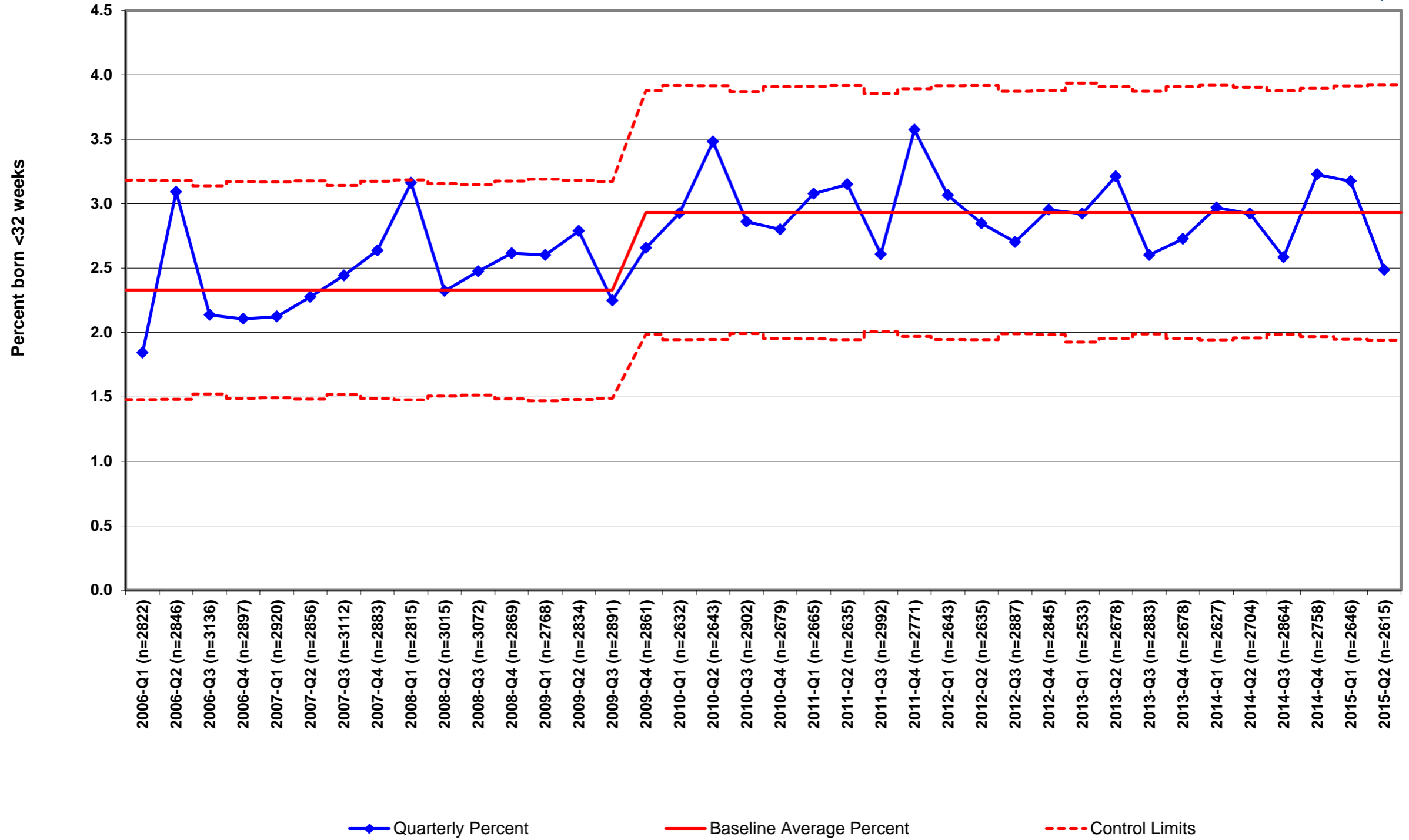
Preterm birth rate, by quarter, 2006-2015: Hamilton County
(Combined estimate of gestation <37 weeks)



Source: Hamilton County Public Health. Updated by J. Besl 7/20/15



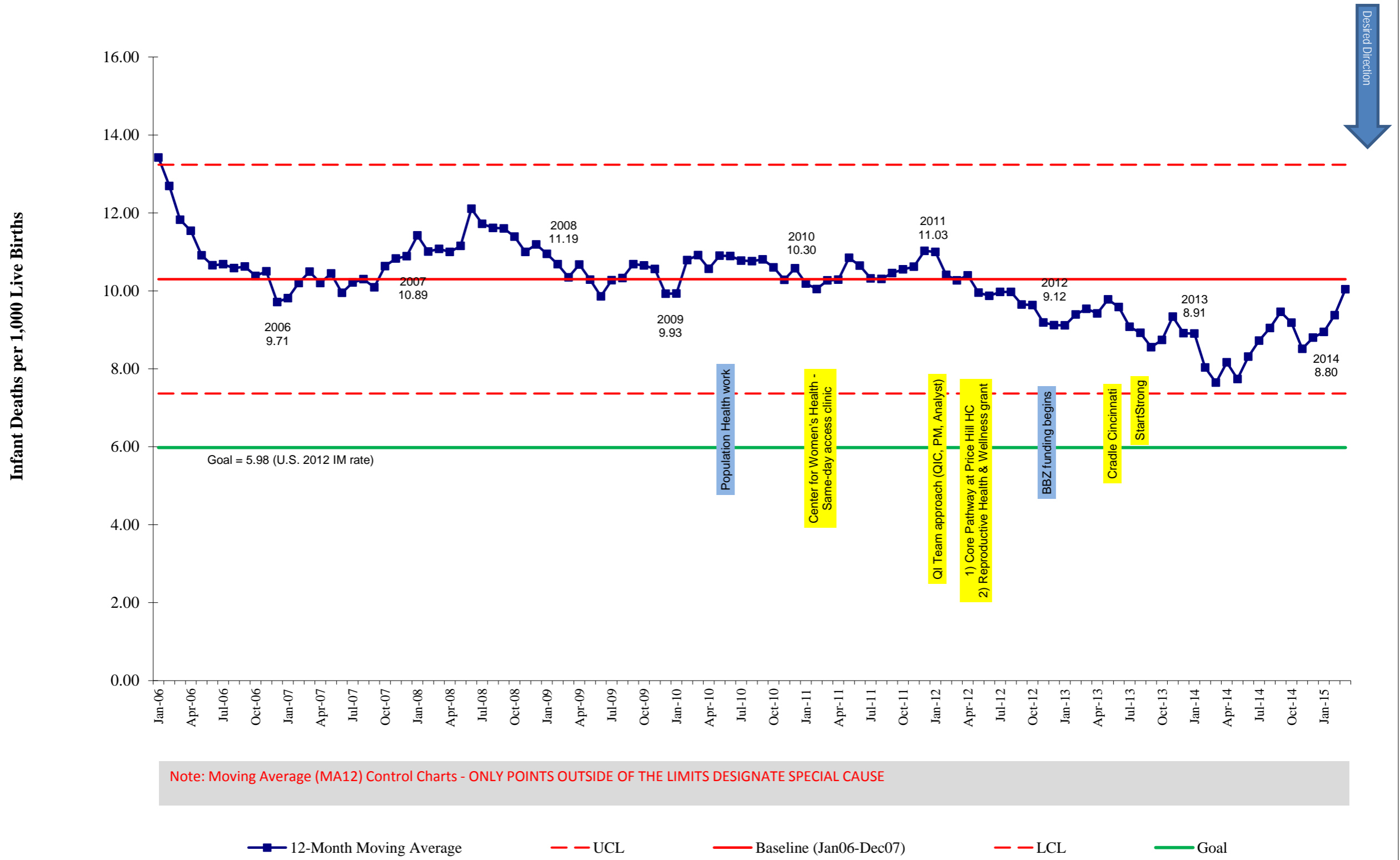
Very preterm birth rate, by quarter, 2006-2015: Hamilton County
(Combined estimate of gestation <32 weeks)

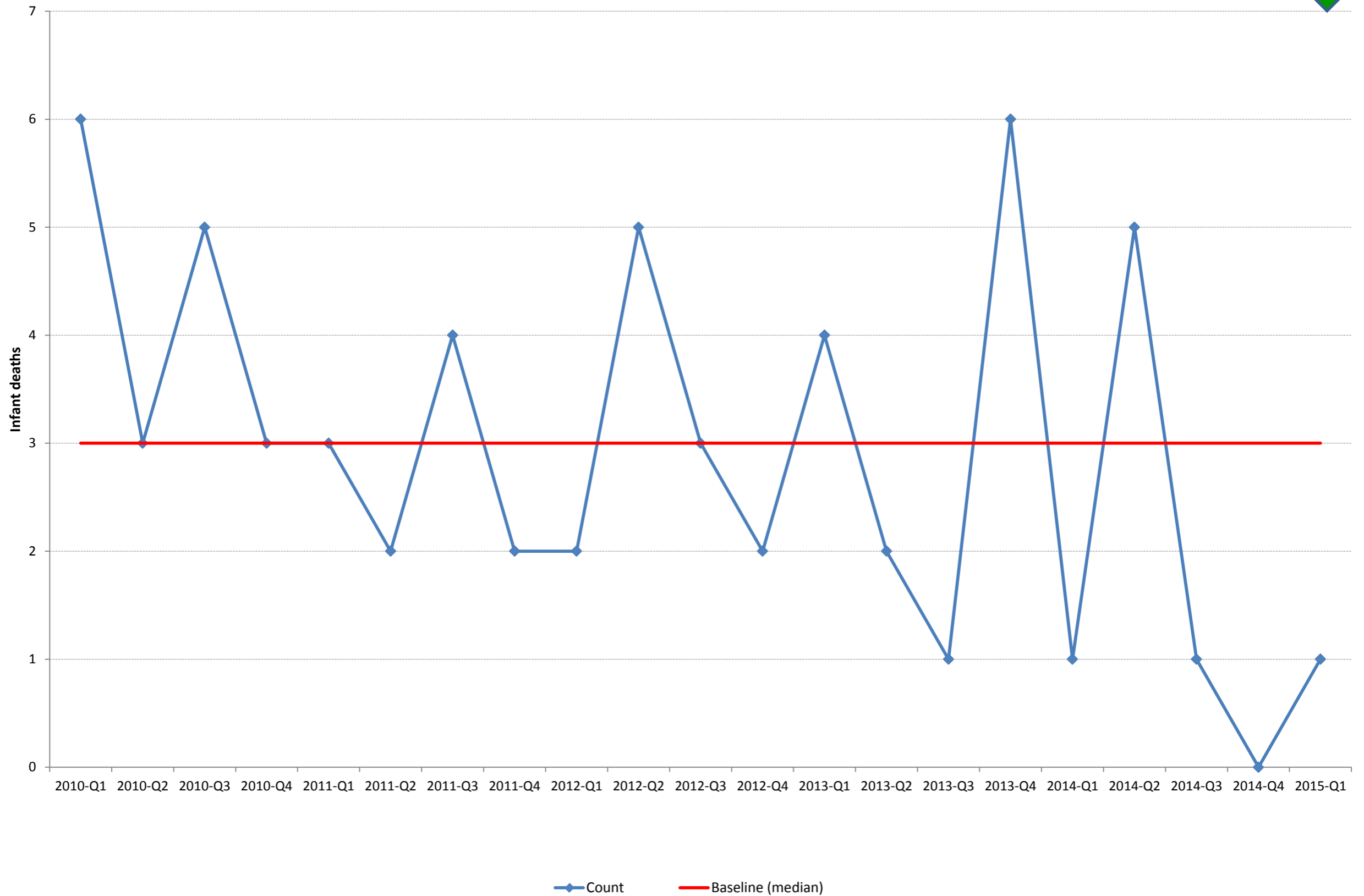


Source: Hamilton County Public Health. Updated by J. Besl 7/20/15

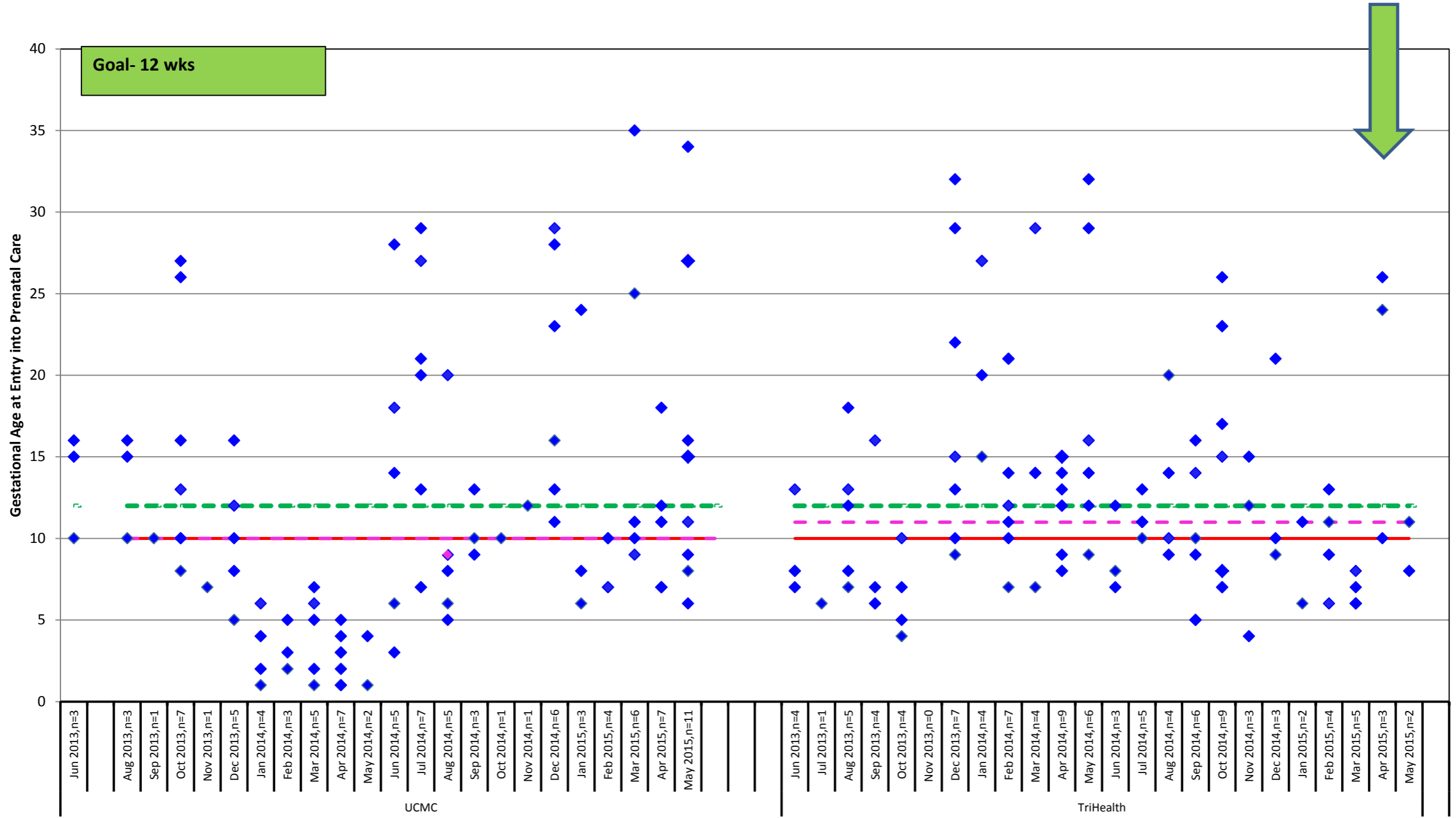


Hamilton County Infant Mortality Rate 12-month moving average





Gestational Age at Entry into Prenatal Care (PNC)* for Avondale (Zip Code 45229) Women by PNC Site



*Prenatal care for women seen at UCMC or TriHealth
 Last updated: 06/17/2015 by: G.Madhavan Anderson Center.
 Source: TriHealth/ UCMC

Month

- - - Goal
 — Overall Median (Both Sites)
 - - - Median by Site

Revision Date: 6-17-15 (v16)

GLOBAL AIM

Eliminate all infant deaths in Hamilton County

SMART AIM

Reduce the Infant Mortality rate (IMR) in Hamilton County from 9.5 to the National IMR of 5.98 (31 fewer infant deaths) by December 31, 2020.

Gestational age Mortality data

96-65

KEY DRIVERS

Early, sustained, and valued evidence-based prenatal care for every mom
3S: smoking, safe sleep, spacing

All women receive counseling for smoking cessation, safe sleep, and spacing by 28 weeks.

No women smoking at 28 weeks

Early, valued, and accessible care in the community

All pregnant women have 1st prenatal visit < 12 weeks

Support for pregnant women through trusted partnerships between prenatal care practices and community based organizations

% women with 1st visit with CHW/HV within 10 days of referral

% women completing post-partum visit within 90 days delivery

Services that support families by addressing hardships (e.g. housing, safety, hunger, income, stress)

Engaged communities that ensure every pregnant mom and infant have their needs met

5 ways we can help

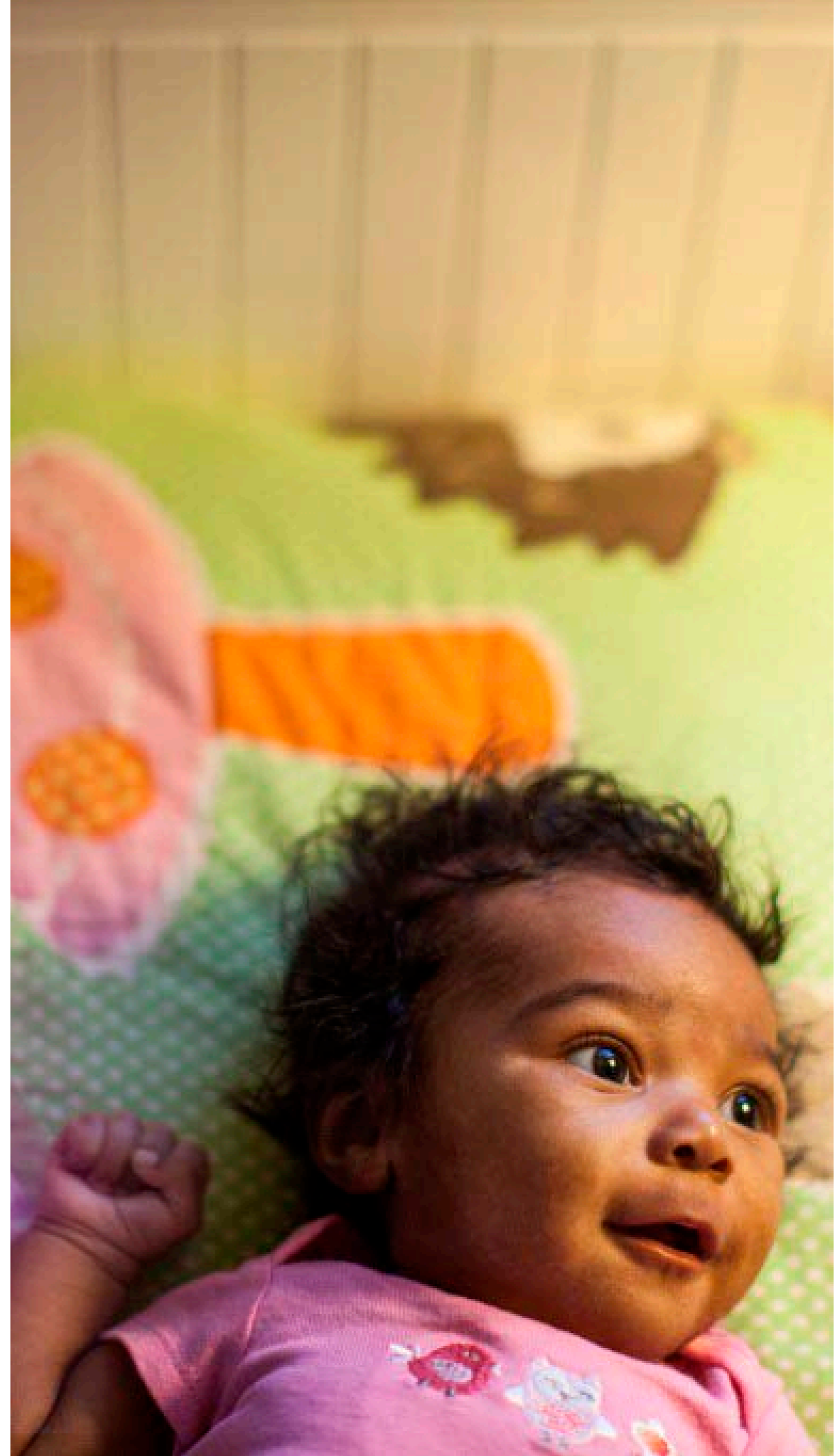
EARLY ACCESS TO CARE

SPACING

SMOKING

SLEEP

**CONNECTIONS
TO SOCIAL SUPPORT**



Revision Date: 6-17-15 (v16)

GLOBAL AIM

Eliminate all infant deaths in Hamilton County

SMART AIM

Reduce the Infant Mortality rate (IMR) in Hamilton County from 9.5 to the National IMR of 5.98 (31 fewer infant deaths) by December 31, 2020.

KEY DRIVERS

Early, sustained, and valued evidence-based prenatal care for every mom
3S: smoking, safe sleep, spacing

Early, valued, and accessible care in the community

Support for pregnant women through trusted partnerships between prenatal care practices and community based organizations

Services that support families by addressing hardships (e.g. housing, safety, hunger, income, stress)

Engaged communities that ensure every pregnant mom and infant have their needs met

STRATEGIES / INTERVENTIONS

Early access to prenatal care

Use a standardized program (e.g. 5A's) to help moms quit smoking before, during, and after pregnancy

Provide safe sleep education to ensure moms understand how to prevent sleep related deaths

Provide education about birth spacing during and after pregnancy

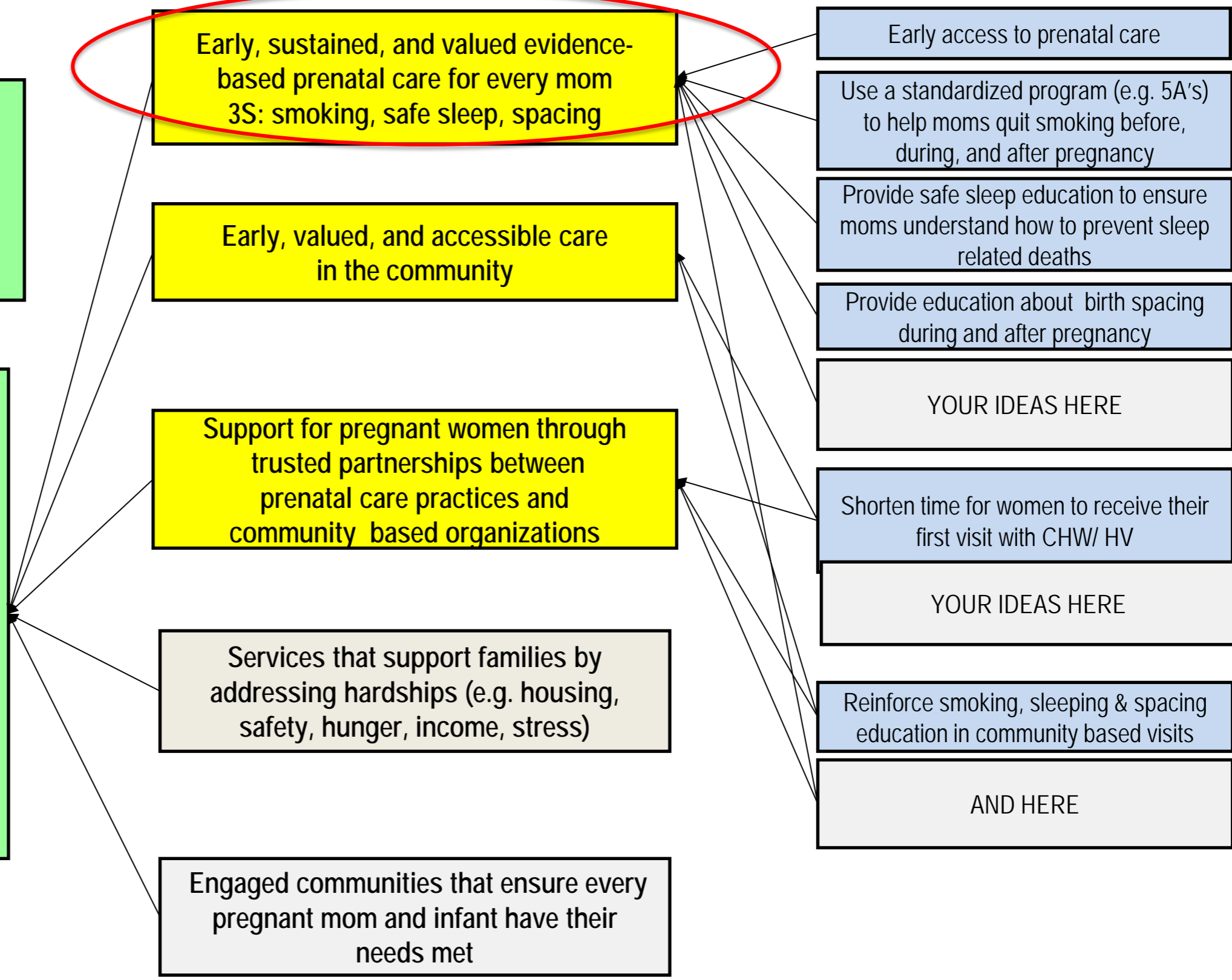
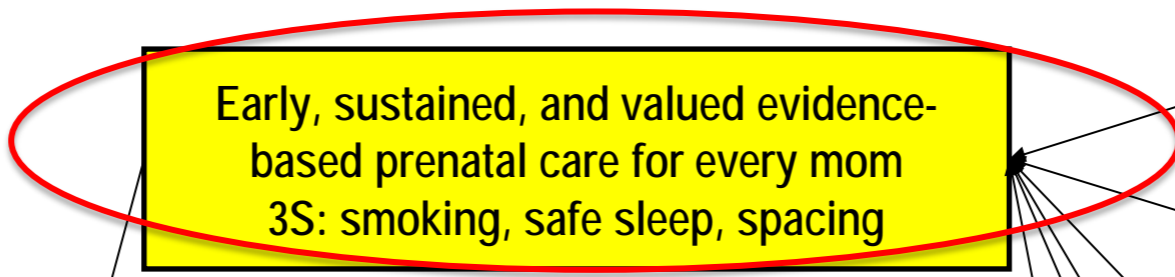
YOUR IDEAS HERE

Shorten time for women to receive their first visit with CHW/ HV

YOUR IDEAS HERE

Reinforce smoking, sleeping & spacing education in community based visits

AND HERE

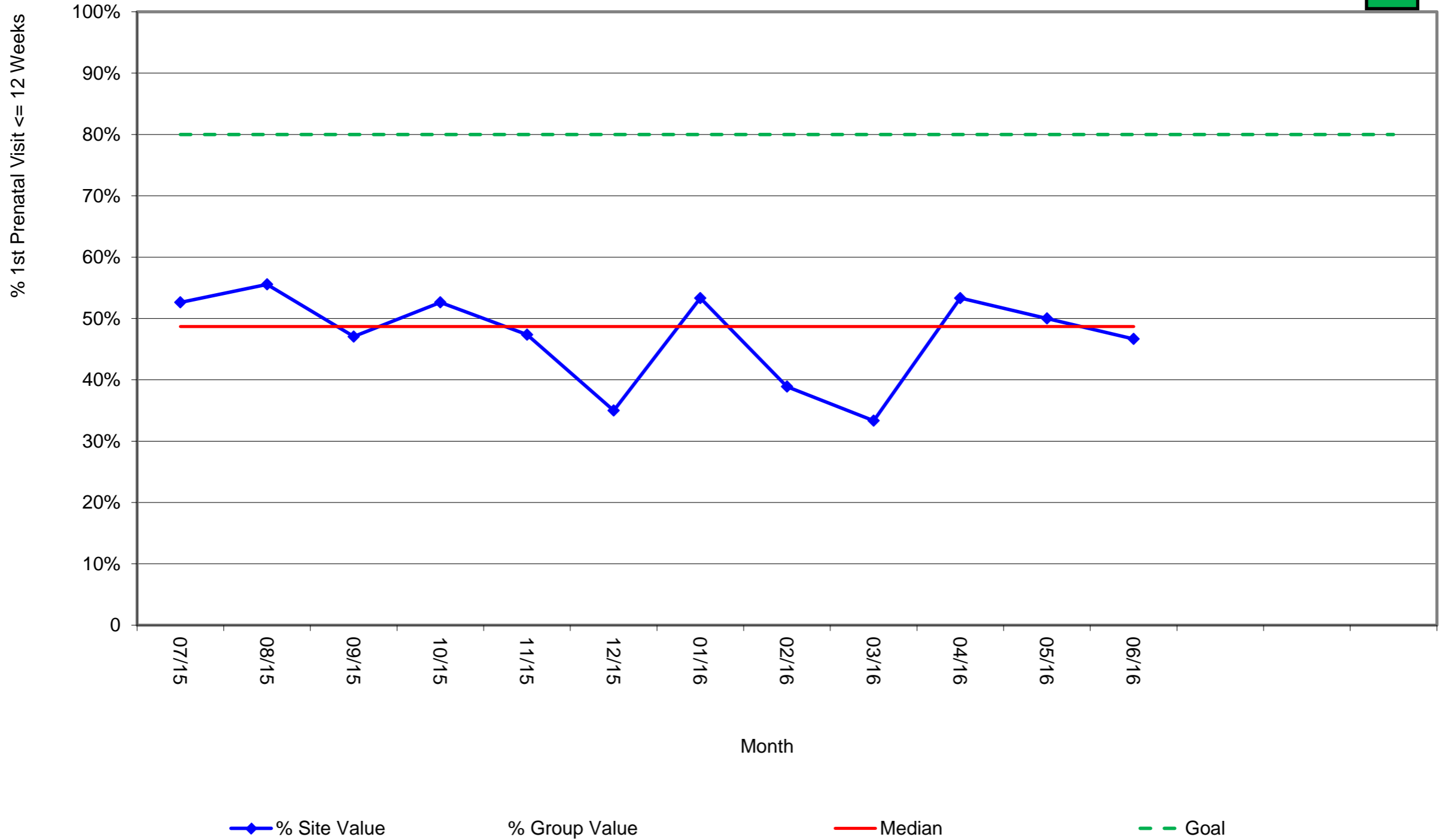
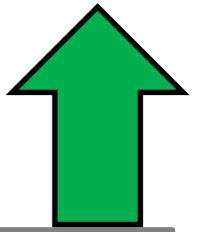


**Early, valued, and accessible care
in the community**

All pregnant women have first prenatal visit < 12 weeks

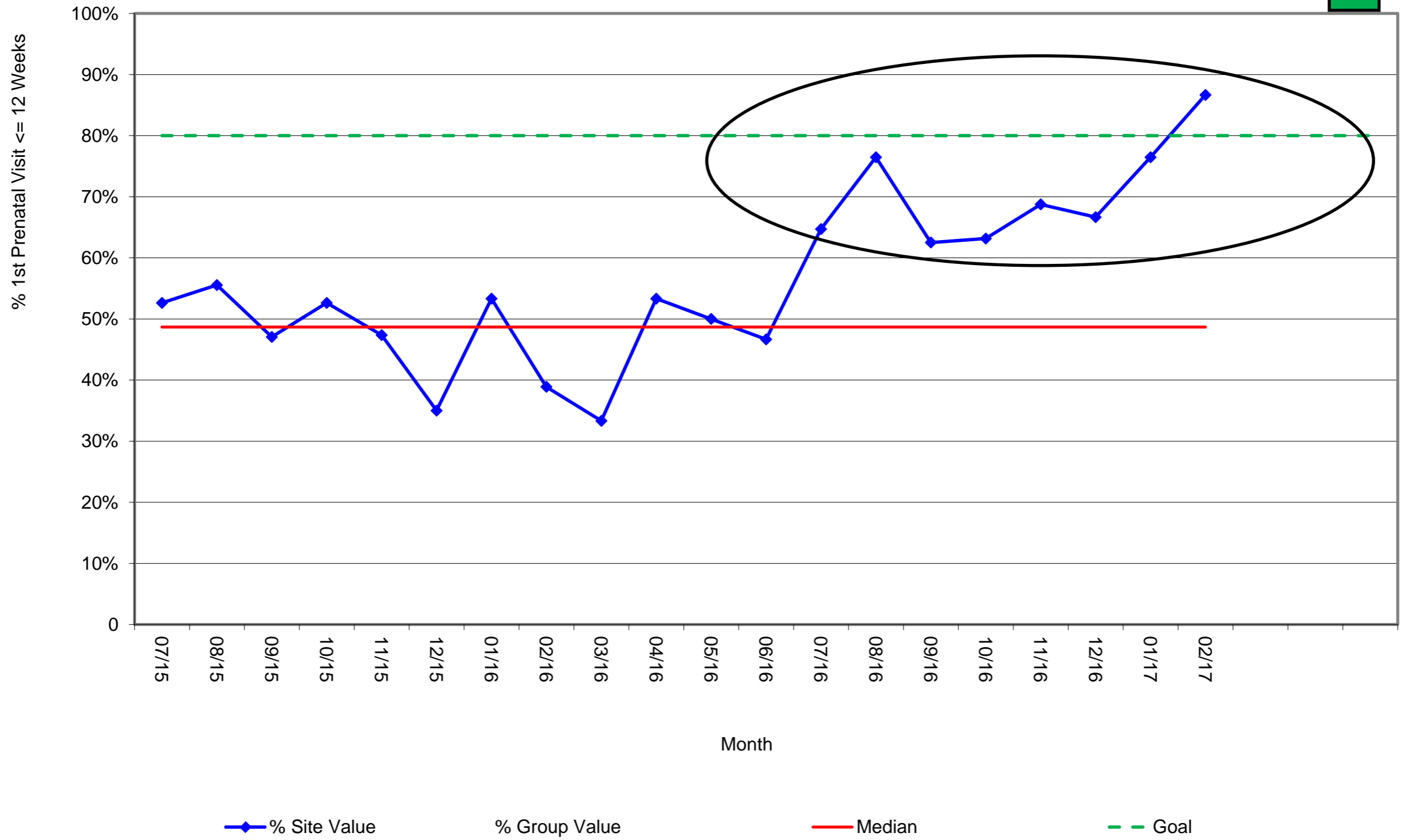
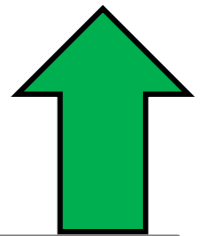


example
Cradle Cincinnati Learning Collaborative
% New OB Patients (non-transfer) First Prenatal Visit <= 12 Weeks
OB Team #1





Cradle Cincinnati Learning Collaborative
% New OB Patients (non-transfer) First Prenatal Visit <= 12 Weeks
OB Team #1



Revision Date: 6-17-15 (v16)

GLOBAL AIM

Eliminate all infant deaths in Hamilton County

SMART AIM

Reduce the Infant Mortality rate (IMR) in Hamilton County from 9.5 to the National IMR of 5.98 (31 fewer infant deaths) by December 31, 2020.

KEY DRIVERS

Early, sustained, and valued evidence-based prenatal care for every mom
3S: smoking, safe sleep, spacing

Early, valued, and accessible care in the community

Support for pregnant women through trusted partnerships between prenatal care practices and community based organizations

Services that support families by addressing hardships (e.g. housing, safety, hunger, income, stress)

Engaged communities that ensure every pregnant mom and infant have their needs met

STRATEGIES / INTERVENTIONS

Early access to prenatal care

Use a standardized program (e.g. 5A's) to help moms quit smoking before, during, and after pregnancy

Provide safe sleep education to ensure moms understand how to prevent sleep related deaths

Provide education about birth spacing during and after pregnancy

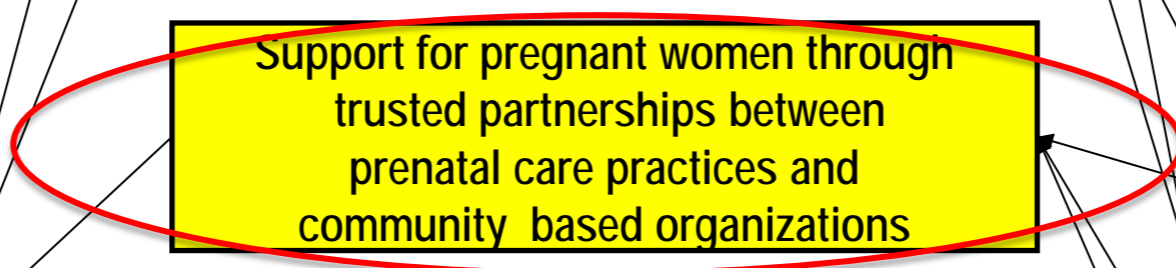
YOUR IDEAS HERE

Shorten time for women to receive their first visit with CHW/ HV

YOUR IDEAS HERE

Reinforce smoking, sleeping & spacing education in community based visits

AND HERE



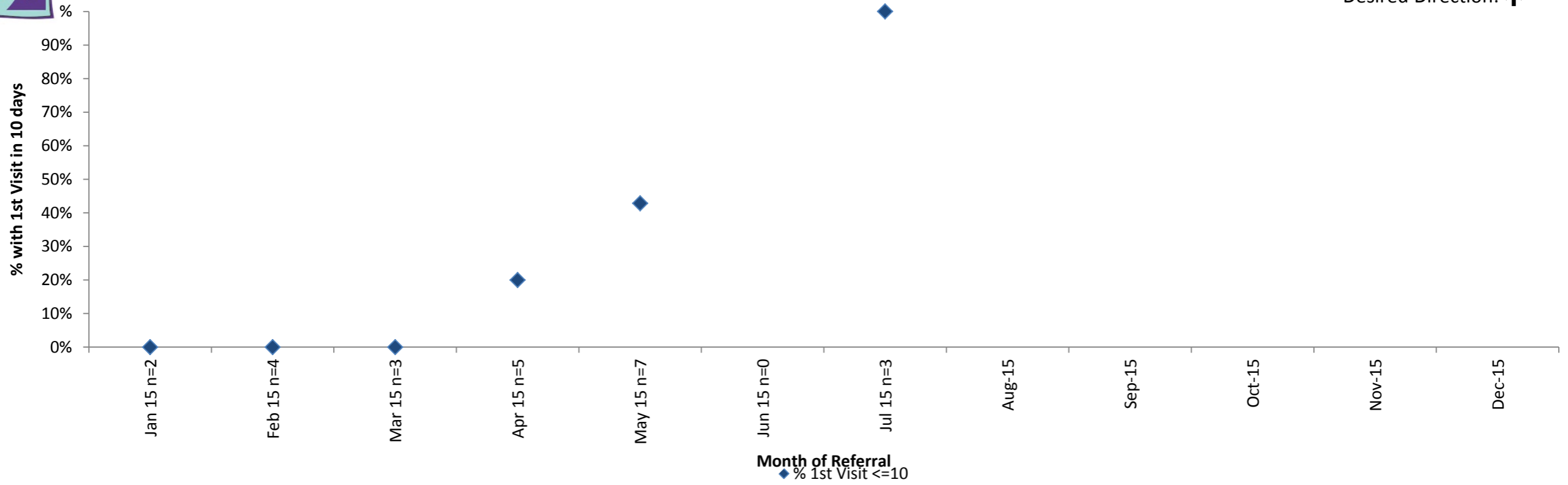
Support for pregnant women through
trusted partnerships between
prenatal care practices and
community based organizations

% Women with Community Health Worker/
Case Management/or Home Visit within 10 days referral

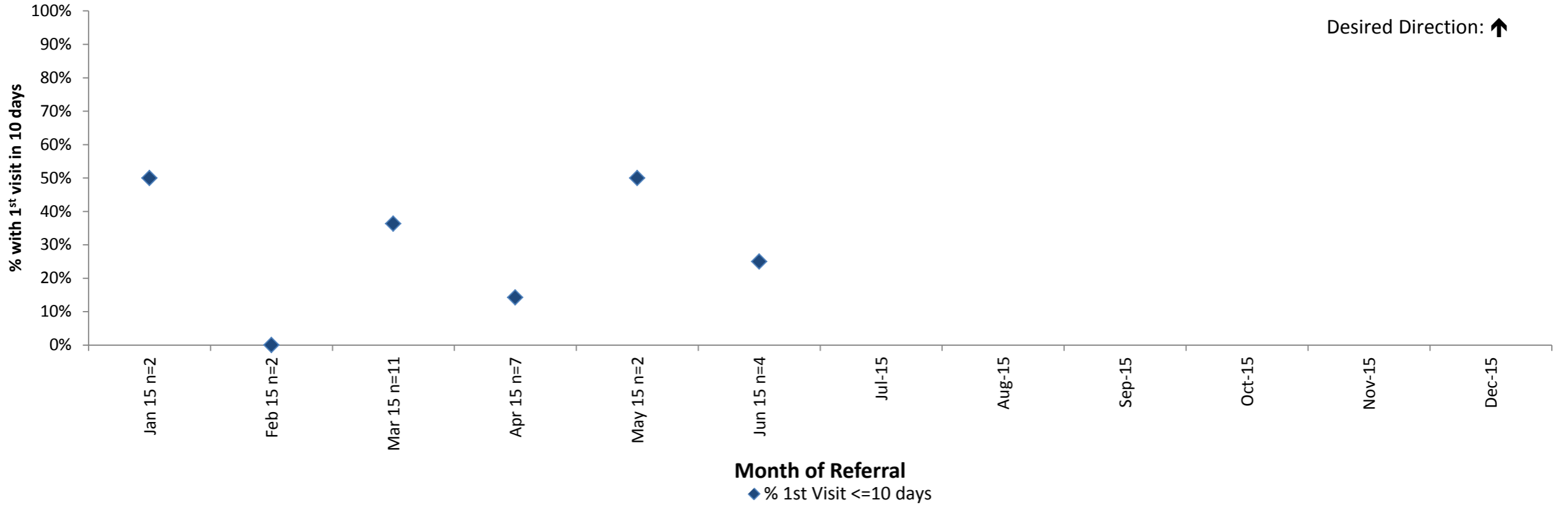
% Women completing post-partum visit w/in 90 days delivery



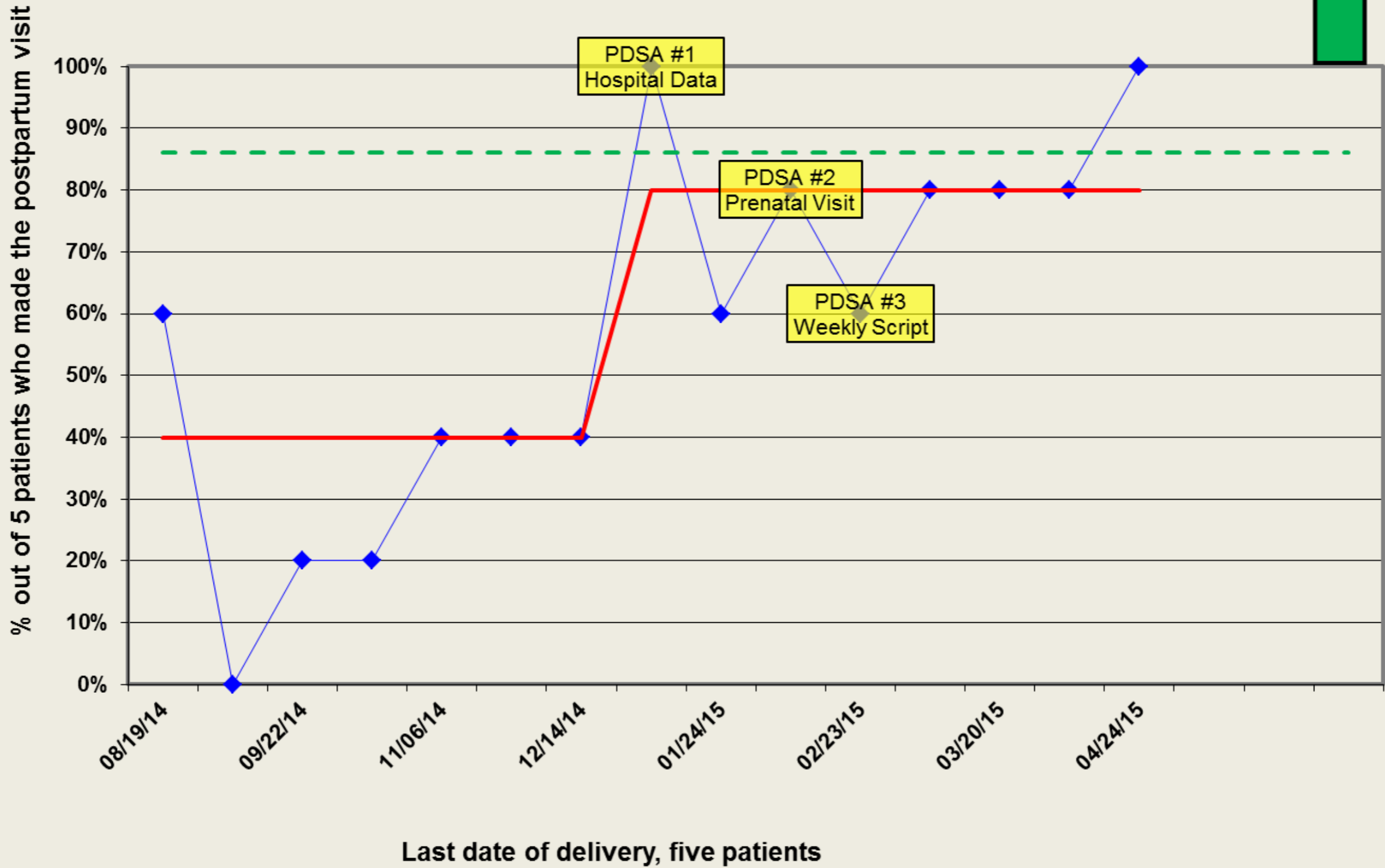
**% Referrals with 1st Visit in 10 Days
(ECS I and ECS II Price Hill 45204 and 45205)**



**% Referrals with 1st Visit in 10 days
(ECS 1 and ECS II Avondale 45229)**



% of HNCC Patients who attended the postpartum visit



◆ % of patients who attended postpartum visit
 — Median
 - - - Goal



LEARNING
COLLABORATIVE

every baby, every day